



LEADERSHIP. ACTION. LEGACY.





# 2019 NATIONAL INNOVATIVE COMMUNITIES CONFERENCE

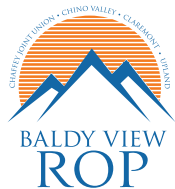
A community collaboration presented by Reach Out and Partners for Innovative Communities.  
[www.pic-nicc.org](http://www.pic-nicc.org)

## Thank you to Our Title Sponsor



## Behavioral Health

## And Supporting Sponsors



Workforce Development Board



Riverside County  
Supervisor - 2nd District  
Karen Spiegel



## A Message From the Executive Director

### Dear Friends and Fellow Radicals:

As we celebrate 10 years of the National Innovative Communities Conference and 50 years of Reach Out, we have a singular opportunity to proclaim shared values that undergird our collective work, and that flow throughout the region.

Looking back to the many social and civil rights movements that originated in 1969, I feel compelled as a resident of the Inland Empire and a person of conscience to share with you the **Inland Empire Bill of Rights for All Residents**, and beseech you to search your hearts and mobilize your hands to achieve equity and inclusion for all children, youth, adults and seniors in the region.



#### I. Quality Healthcare

The right to quality, affordable, integrated healthcare and preventive services, regardless of ability to pay or formal status.

#### II. Education

The right to effective and in-demand educational opportunities that advance a climate of safety, accountability, and innovation-based academic rigor.

#### III. Equitable Economic Opportunity

The right to equity-focused economic development that improves quality of life, and advances fairness, inclusion, and opportunity.

#### IV. Dignity in Justice

The right to a fair and constructive relationship with law enforcement, and an immigration system that respects human rights.

#### V. Housing

The right to affordable, stable housing.

#### VI. Safe Homes, Neighborhoods & Schools

The right to nurturing and safe homes, neighborhoods, and schools that are free from substance use, violence and fear.

#### VII. Healthy Foods & Environment

The right to a healthy physical environment and fresh, locally grown foods that promote personal and community health and well-being.

#### VIII. Voice & Leadership

The right to speak up about social issues and feel safe to express beliefs, culture, and opinions that allow communities to work together in unity for the greater good.

We've intentionally chosen only 8 items for the Bill of Rights so that you can add your own. This Bill of Rights belongs to all of us, and I look forward to hearing what is in your heart. Fifty years after 1969, we are still in need of Radicals who will fight for equity, dignity, and prosperity for the Inland Empire. Equity shouldn't be radical, and we can't stop until it is entrenched and inalienable for all.

Yours in solidarity,

Diana Fox  
Executive Director



## NICC IS HOSTED BY REACH OUT

Reach Out is a 501(c)3 non-profit, non-governmental organization dedicated to creating vibrant communities where all residents and businesses thrive in a peaceful environment.

**Since 1969**, Reach Out's mission is to strengthen communities by bringing people together to solve our region's toughest issues which includes breaking barriers to educational achievement, expanding economic opportunities, and creating safe, healthy and innovative communities.

For more information about our organization visit [www.we-reachout.org](http://www.we-reachout.org)

**Reach Out is creating a better world with the following successful programs:**

### BUILDING THE INLAND EMPIRE ECONOMY

The intersection of a strong economy and health is the foundation of Reach Out's Inland Health Professions Coalition. The Inland Empire has the most severe doctor shortage in California, and critical shortages of nurses, specialists, behavioral health and public health professionals. IHPC is the leader in advancing policies and programs to achieve a health workforce that can meet the needs of an ever-expanding and diverse Inland Empire. Last year alone, more than 7,500 employers, educators and students participated in IHPC's trainings, conferences, internships, and Nexus Groups. Reach Out is the Health Care Consultant to both Riverside and San Bernardino Counties' Workforce Development Boards.

### CHILDREN, YOUTH AND FAMILIES

Every year, more than 30,000 Inland Empire residents receive services and support from Reach Out. Homeless and foster youth are helped to continue their education and to find living-wage jobs; families that were caught in cycles of abuse are taught how to be nurturing and compassionate; and, students who are struggling in school due to bullying, trauma, and emotional pain are supported and deeply engaged to not only be able to overcome their grief, but to rise above and become leaders on their campuses and in their communities.



### HEALTHY, PROSPEROUS COMMUNITIES

Reach Out specializes in creating thriving communities by supporting and mobilizing residents to take leadership positions to build the health and quality of life in the cities we serve. Our Healthy City initiatives are the model for the region on how businesses, government and residents can work together to create vibrant, prosperous, healthy places to live and work. We are especially proud of our current work leading Partners for Innovative Communities, Latino Health Collaborative, Healthy San Bernardino and Healthy Jurupa Valley. Reach Out engages all our partners to take an active role in their community to create movements that improve the overall growth and well-being of their city.

### CREATING SAFE COMMUNITIES THROUGH POLICY

With our core value of advocating for Health in All Policies, we have changed the policy landscape in our cities across the region. Cities are the go-to places for inspiration on creating safe and healthy environments for all our residents, and Reach Out's policy and advocacy work is profoundly influenced by our intersectoral partnerships with government, law enforcement, schools, residents, and businesses. In the past three years alone, Reach Out has passed 22 local ordinances that have created greater safety for our youth and families.



## NICC Propels & Supports The Community Health Improvement Plans Of San Bernardino County & Riverside County

### San Bernardino County

CVS, Community Vital Signs was originally initiated by San Bernardino County Departments of Public and Behavioral Health as well as Arrowhead Regional Medical Center, CVS transformed into a community initiative to improve the health of all San Bernardino County residents.

In March 2012, a cross sector of community leaders and decision makers throughout the County gathered to discuss and adopt the Vision, Value, and Purpose statements developed by their peers. CVS envisions a county where a commitment to optimizing health and wellness is embedded in all decisions by residents, organizations and government.

#### **Community Vital Signs is guided by the following values:**

**Community-driven:** Shared leadership by and for residents, engaging and empowering all voices

**Cultural competency:** Respecting and valuing diverse communities and perspectives

**Inclusion:** Actively reaching out, engaging, and sharing power with diverse constituencies

**Equity:** Access to participation, resources and service, addressing historical inequities and disparities

**Integrity and Accountability:** Transparent and cost-effective use of resources

**Collaboration:** Shared ownership and responsibility

**Systemic change:** Transform structures, processes, and paradigms to promote sustained individual and community health and well-being

#### **CVS San Bernardino County Priority Areas:**

- Access to Health & Wellness
- Economy
- Education
- Safety

### Riverside County

SHAPE Riverside County Strategic Health Alliance Pursuing Equity is a community-wide effort to coordinate the resources of public health system partners to improve health for all communities in Riverside County. This initiative is coordinated by the Riverside County Health Coalition and its leadership team. The vision of SHAPE is to provide an equal opportunity for all Riverside County residents to achieve optimum and health and wellness.

#### **SHAPE Riverside County is charged with doing the following to fulfill our vision of health in Riverside County:**

**1) Community Health Assessment:** SHAPE supports and steers the process for conducting a comprehensive community health assessment for Riverside County.

**2) Community Health Improvement Plan:** SHAPE uses findings from the community health assessment to update a community health improvement plan, including priorities, goals, objectives, and strategies.

**3) Coordination and Collaboration:** SHAPE helps to coordinate and collaborates with community partners on community health planning and improvement activities in Riverside County.

**4) Capacity Building:** SHAPE acts as a resource for using data and best practices in community health planning and improvement activities.

#### **SHAPE Riverside County Priority Areas**

- Creating Healthy Communities
- Promoting Healthy Behaviors
- Connecting and Investing In People
- Improving Access to Care





# 2019 NATIONAL INNOVATIVE COMMUNITIES CONFERENCE

A community collaboration presented by Reach Out and Partners for Innovative Communities.  
www.pic-nicc.org

## Tuesday June 18, 2019

8:30 AM **Registration Opens**

10:00 AM- **Opening Ceremonies / Welcome - Ballroom BC**  
10:30 AM

10:45 AM - **Breakout Sessions**  
12:00 PM

Ballroom BC	Barbara Alejandre - Vital Signs: Transforming Lives Through Student Voice (Youth Panel)
Room 103	Dr. Salome Mshigeni - Fighting Substance Use Adiction: The Need to Create Policies that Support Prevention Efforts
Room 104B	Sahara Huazana - Exploring the Inspiration, Lessons, and Breakthroughs, From Rural Communities (traducido al espanol)
Room 106	Dr. Letitia Wright - Entrepreneurship as Youth Homelessness Prevention
Room 200AB	Kara D. Lubin - Creating Champions and Change, One Mile at a Time
Room 200C	Dr. Kristy Remick - Preparing Students for a Lifetime of Learning
Room 203C	Steve Lambert - Changing the Narrative Workshop

12:00 PM - **Ballroom BC Lunch Plenary**  
1:30 PM  
Keynote: Ken Seeley  
Lunch Buffet, Entertainment & Networking

1:30 - 3:30 **The Convergence Inland Health Workforce Summit (Ballroom)**  
The expanding healthcare sector is a primary economic driver for the region, and as a health leader in Inland Southern California, you are invited to attend The Convergence Inland Health Workforce Summit. The Summit features noted speakers from across the state, and will result in articulating the bold policy and system actions that will build the health workforce we need now.  
\*See page 10 for additional details

1:45 PM - **Breakout Sessions**  
3:00 PM

Room 103	Lara Kain - Be the Spark! building Resilient Communities
Room 104B	Nelly Telleria, Dr. Shene Bowie Hussey, Ceclia Arias, Ra'Niesha Bratton - Transofrm Your Community! Adult and Youth Leadership Successes in the Healthy Eating Active Living Initiative.
Room 106	Dr. Jessica Martone, Audrey Roy & Traci Shirachi - How to Identify and Measure Outcomes vs. Focusing on Outputs for Non-profit Programs/Services
Room 200AB	Luz Gallagos & Vivian De Armes - Immigraton Staff Attorney Defend and Protect - Where we are? Where do we go from here?
Room 200C	Elyse Severson - Effects of Teen Dating Violence (traducido al espanol)
Room 203C	Pat Hines - Traffic - A Health Crisis for Youth

## Tuesday June 18, 2019

3:15 PM -  
4:30 PM

### Breakout Sessions

Room 103	Ronnie Robinson - Help Me Grow IE: System Linkages
Room 106	Yu Zhang - Perfecting your Survey Development Skill: Why and How?
Room 104B	Demi Espinoza, Maha Rizvi & Julia Lipp-Klein Strategies for Cultivating Equity Champions of SRTS tactical Urbanism
Room 200AB	Jennifer Kane - Human Restoration Services
Room 200C	Artina McIntosh - Reducing Poverty Through Gig Badge and New Collar Economy
Room 202AB	Deputy Aaron Halloway - Homeless Outreach and Engagement through Community Partnership (traducido al espanol)
Room 203B	Paul Espinosa - Bullet Proof Identity (Youth Track)
Room 203C	Justine Garcia - Non-Traditional Partnership: Government & Community Engage in a Multi-faceted Approach to Empower Teens to Take Action and Build a Culture of Health (Youth & Adult)

4:30 PM

### End of Day One

### Special Event:

#### 50th Anniversary Dinner Celebration

**Dinner - Awards - Entertainment - Silent Auction**

(additional cost to attend: \$125)

## Simplify your day, Use the NICC App! Communicate with friends and plan your day!

Welcome to the 2019 National Innovative Communities Conference

*Instructions to download the 2019 National Innovative Communities Conference mobile app powered by Crowd Compass:*

- 1) Search and **download** the **Crowd Compass Attendee Hub** app on your mobile device or tablet through the app store.
- 2) Find and download the **2019 National Innovative Communities Conference** event app in the Crowd Compass Event Directory.
- 3) Lastly, add yourself as an attendee by clicking the menu icon at the top of the page. Next, click the setup icon, click log-in, and then follow the directions from there to become an attendee and start making connections.





## Ken Seeley Keynote Speaker Day 1

Finding Your Truth...What is holding you back?

Ken Seeley has been featured on the Emmy Award winning A&E television series Intervention and founder of Intervention911, one of the most prominent and successful private intervention services in the country. During the lunch plenary session on Tuesday, June 18, Ken will share his experiences about addiction, denial and how to break through the barriers that are holding you back.

Whether coping with a severe or a soft addiction, a life-threatening situation, or just an impediment to true happiness, we're all in denial about something. It might be small and seemingly innocent, such as the fact that you're not trying to excel in your job as much as you could or should be. Or it could be much larger and destroying your life. The truth is, no matter who you are, no matter how small or large your problems may seem, denial is holding you back from living your life to the fullest.

Be one of the first to register for the conference so you don't miss hearing this inspirational talk!

## Breakout Sessions

### **Fighting Substance Use Addiction: The Need to Create Policies that Support Prevention Efforts**

Salome Mshigeni

*PhD Assistant Professor California State University San Bernardino*

Room: 103

10:45 A.M. - 12:00 P.M.

The misuse of alcohol and drugs and substance use disorders has a huge impact on public health in the United States. In 2014, over 43,000 people died from a drug overdose, more than in any previous year on record and alcohol misuse accounts for about 88,000 deaths. Substance misuse is also associated with a wide range of health and social problems, including heart disease, stroke, high blood pressure, various cancers, mental disorders, driving under the influence and other injuries. Given the health impact and increased medical cost, it is critical to prevent substance misuse by identifying those who have already begun to misuse substances and intervene early. At the policy level, research shows that higher alcohol prices reduce alcohol misuse and related harms. Hence, evidence-based prevention interventions, carried out before the need for treatment, are critical because they can delay early use and stop the progression from use to problematic use or to a substance use disorder (including its severest form, addiction among the youth), all of which are associated with costly individual, social, and public health consequences.

## **Creating Champions and Change, One Mile at a Time**

Kara Lubin

*100 Mile Club Founder*

Room: 200AB

10:45 A.M. - 12:00 P.M.

What makes an individual, team, or an organization successful? I believe I have the answer. As founder of the 100 Mile Club and a former special education teacher, I had often wondered what caused the transformation of student after student and the Club exponential growth. Put another way: What creates success? The answer came from watching and working with the students who ran in the Club. What these students taught me is that success is the result of specific steps, and these steps are the foundation upon which success is built. I will share the foundational steps, the inspiring stories behind them, and how anyone can apply these steps and lessons to create true champions and change in any school or organization.

## **Exploring the Inspiration, Lessons, and Breakthroughs, from Rural Communities**

Sahara Huazana

*Director of Capacity Development, Alianza Coachella Valley*

Room: 104B

10:45 A.M. - 12:00 P.M.

Understanding the blind spots of environmental movement: adding communities, youth, and families to the lens of habitat and wildlife preservation and reparation. Seeing environmental justice community organizing as an untapped opportunity in movement building. Exploring the linkages between racial and economic equity and environmentalism to create productive pathways to significant solutions and successes. Identifying essential ingredients in authentic collaboratives that lead to policy and system changes. How data and participation in data collection and analysis about environmental issues can empower community leaders to push for a voice at the decision-making table.

## **Preparing Students for a Lifetime of Learning**

Kristy Remick

*Western University of Health Sciences*

Room: 200C

10:45 A.M. - 12:00 P.M.

Millions of students of ALL AGES, many with 20/20 eyesight, have educational near vision problems that interfere with their school success. Dr. Kristy Remick, author of the new breakthrough book, *EYES ON TRACK*, will speak to educators, community members, and those interested in juvenile delinquency prevention about her work to identify and help students that struggle with reading. Dr. Remick shares her 30 years of experience with attendees to help students overcome school difficulties that can lead to behavior problems, school scars and even juvenile delinquency. Includes hands on "EYES ON TRACK" Detection Screening, a system that is easy to use in the classroom and at home. This system will "prepare students for a lifetime of learning."



## 2019 NATIONAL INNOVATIVE COMMUNITIES CONFERENCE

A community collaboration presented by Reach Out and Partners for Innovative Communities.

[www.pic-nicc.org](http://www.pic-nicc.org)

### Vital Signs: Transforming Lives Through Student Voice

June 18th at 10:45am in the Ballroom

SBCSS, in collaboration with the San Bernardino Community Vital Signs (CVS) Initiative, is transforming lives through student voice. The award-winning SBCSS Student Advisory Panel program provides an exceptional leadership and civic engagement opportunity for diverse students from across the county to inform and influence policy and systemic change opportunities impacting the communities in which they live, work, learn, and play. For the past several years, participants have addressed issues important to their community and their future by engaging with their peers to analyze and gain insights from San Bernardino County's Community Transformation Plan 2015-2020 developed through the CVS Initiative. The students' presentations demonstrate how key health issues related to factors like the economy, education, access to health and wellness (including access to health care, behavioral health, and healthy behaviors), and safety (including community and school safety) are affecting the vitality and wellbeing of our countywide communities.

#### Order of Presentations:

1. **Healthy Relationships** (Health and Wellness)

Presenters: Leidy Campos, Montclair High School Graduate; Nayeli Hernandez, Montclair High School Graduate; Matthew Lee, Excelsior Ontario Student

2. **uConnect** (Education)

Presenter: Cheyanne Rose, Eric Birch High School Student

3. **Would You Rather Be Safe or Sorry?** (Safety)

Presenters: Ayah Azzawi, Chaffey District Online High School Graduate; Abigail Anderson, Chaffey District Online High School Graduate; Nylah Murphy, Chaffey District Online High School Graduate

4. **OUR ECONOMY NEEDS HOPE** (Economy)

Presenter: Prinny Martinez, Ontario High School Student; Harrison Ridland, Rim of the World High School Graduate

5. **The Wealth of Mental Health** (Health and Wellness)

Presenters: Brynna Barker, Chaffey District Online High School Graduate

#### Presenters:

Members of the 2019 San Bernardino County Superintendent of Schools (SBCSS) Student Advisory Panel Program: Abigail Anderson, Chaffey District Online High School Graduate; Ayah Azzawi, Chaffey District Online High School Graduate; Brynna Barker, Chaffey District Online High School Graduate; Leidy Campos, Montclair High School Graduate; Nayeli Hernandez, Montclair High School Graduate; Matthew Lee, Excelsior Ontario Student; Prinny Martinez, Ontario High School Student; Nylah Murphy, Chaffey District Online High School Graduate; Harrison Ridland, Rim of the World High School Graduate; Cheyanne Rose, Eric Birch High School Student

#### Moderators:

Barbara Alejandre, Community Vital Signs Steering Committee Co-chair and SBCSS Chief Intergovernmental Relations Officer; George Lamb, Community Vital Signs Steering Committee Member and President/CEO of the Faith Advisory Council for Community Transformation



## The Convergence Inland Health Workforce Summit

June 18th at 1:30pm in the Ballroom

The expanding healthcare sector is a primary economic driver for the region, and as a health leader in Inland Southern California, you are invited to attend The Convergence Inland Health Workforce Summit. The Summit features noted speakers from across the state, and will result in articulating the bold policy and system actions that will build the health workforce we need now. Confirmed speakers include:

- Elizabeth Gibboney, CEO – Partnership HealthPlan of California\*
- Jeffrey Oxendine, CA Future Health Workforce Commission-former Co-Director; CEO, Health Career Connection; Director of Health Workforce and Diversity, UC Berkeley School of Public Health
- Anne Bakar, President & CEO, Telecare Corporation\*
- Veronica Kelley, DSW, Director, San Bernardino County Department of Behavioral Health
- Margarita Luna, The California Endowment
- Greg Buchert, MD MPH, President, Care1st Health Plan, Blue Shield of California
- Emma Simmons, MD, MPH, Dean of Student Affairs, UCR School of Medicine
- Kevin Barnett, DrPH, MCP, Senior Investigator, Public Health Institute
- Trudy Raymundo, Director, San Bernardino County Public Health

\*Denotes a Commissioner, California Future Health Workforce Commission

Following the Summit, The Convergence, under the direction of health workforce leader Reach Out, will engage its members in accomplishing regional priorities:

- Scope of Practice Policy Initiatives: Support policy change to maximize the role of nurse practitioners, physician assistants, and pharmacists as part of the care team to help fill gaps in primary care, and providing them with greater practice authority, with particular emphasis in underserved communities.
- Community Health Worker Certification and Deployment: Support policy work and training to scale the engagement of community health workers through certification, training, and reimbursement, broadening access to prevention and social support services.
- Pipeline Development Policy Initiative: Support policy and systems work that will expand and scale pipeline programs to recruit and prepare students from underrepresented and low-income backgrounds for health careers with mentorship, academic, career, and psychosocial support.
- Mental Health Workforce: about two-thirds of California adults with a mental illness and two-thirds of adolescents with major depressive episodes do not receive treatment. The opioid crisis and growing homelessness across the state will likely continue to create high demand for behavioral health services.
- Other Initiatives: following the June 18th Convergence meeting, additional input will be gathered from Convergence members on potential initiatives. These may include mental/behavioral health and/or public health focus areas.

The Convergence provides a united and strategic opportunity to meet the health and economic needs of Inland Southern California. The physical and economic health of Inland Southern California is everyone's business, and that is why this initiative resonates with so many partners. The Convergence's work encompasses Riverside County, San Bernardino County, and the Eastern San Gabriel Valley region of Los Angeles County and is a membership organization focused on high-level policy and systems interventions and initiatives.



# 2019 NATIONAL INNOVATIVE COMMUNITIES CONFERENCE

A community collaboration presented by Reach Out and Partners for Innovative Communities.  
[www.pic-nicc.org](http://www.pic-nicc.org)

## Entrepreneurship as Youth Homelessness Prevention

Letitia Wright

*Stand Up For Kids*

Room: 106

10:45 A.M. - 12:00 P.M.

I along with my teacher partner created a program for at risk youth that centers around entrepreneurship. It has been running for 3 years now and has won underserved youth \$8,000 in prize money to start businesses. I want to share how entrepreneurship is over looked as an option for underserved youth.

## Be the Spark! Building Resilient Communities

Lara Kain

*ACEs Connection's Southern California Community Facilitator*

Room: 103

1:45 P.M. - 3:00 P.M.

Without addressing both historical traumas, and generational trauma, ACEs awareness about an individuals and history with developmental trauma, will not be enough. Too many children and communities are rooted in and shaded by the multiple branches of adversity. A trauma-informed framework encompasses all parts of a community and all community members. Its work done by, for, and with all of us and tends to work best when led by community residents. While there are no easy instructions for creating trauma-informed schools, communities or initiatives, none of us is starting from scratch and we can learn from each other. We will explore several models as a starting place as well as examples of communities that have started this effort organically. Together, we can form, join, support and celebrate trauma-informed community initiatives.

## How to Identify and Measure Outcomes vs Focusing on Outputs for Non-profit Programs/Services

Dr. Jessica Martone

*Director of Research and Evaluation at SmartStart Evaluation and Research*

Room: 106

1:45 P.M. - 3:00 P.M.

Do you want to know the true impact of your program? What about demonstrating that impact to a funder? Too often organizations focus on their outputs, which demonstrate the reach of their program, but do not examine how participants and the community have changed as a result of the program. In order to understand these important outcomes, you need to not only be able to identify them, but select the appropriate measurement. In this presentation you will learn to identify the difference between an output and outcome, define indicators of these outcomes, and best practices for measuring them. We will also discuss a few examples including different approaches to measuring educational and psychosocial outcomes, and the pros and cons to those approaches.

## **Transform Your Community! Adult and Youth Leadership Success in the Healthy Eating Active Initiative**

Nelly Telleria

*Program Associate at Riverside Community Health Foundation*

Room: 104B

1:45 P.M. - 3:00 P.M.

This session will take participants through the Eastside Healthy Eating Active Living (HEAL) Zone Initiatives six-year implementation process funded by Kaiser Permanente in Riverside. The Eastside HEAL Zone Initiative exists to create a culture of unity, health, hope, and leadership among community members and stakeholders. The Eastside HEAL Zone works under ten strategies that includes: Resident Leadership, Physical Activity, Healthy eating promotion within faith based communities, School Wellness, Green Alleyway, Youth Engagement, clinic to community integration, Healthy Food Programs, and a Communication Plan.

## **Immigration Staff Attorney Defend and Protect - Where we are? Where do we go from here?**

Luz Gallagos

*Community Programs Director at TODEC Legal Center*

Room: 200AB

1:45 P.M. - 3:00 P.M.

In this workshop TODEC will explain the current reality for documented and undocumented immigrants in the USA. Including community education that will include Up-To-Date Immigration Policy Updates, Know Your Rights, DACA, Citizenship, and other immigration reliefs. State laws that protect all residents of California regardless of immigration status and free legal resources.

## **Effects of Teen Dating Violence**

Elyse Severson

*Prevention Manager at House of Ruth*

Room: 203B

1:45 P.M. - 3:00 P.M.

This workshop aims to empower young people and individuals who work with young folks to identify unhealthy or abusive behavior in teen relationships. It also focuses on building healthy relationships from the ground up. We will be discussing the warning signs of what an unhealthy or abusive relationship can look like, as well as identifying what characteristics a healthy relationship promotes. We invite you to join us and create space for our youth to be heard and supported!



# 2019 NATIONAL INNOVATIVE COMMUNITIES CONFERENCE

A community collaboration presented by Reach Out and Partners for Innovative Communities.  
[www.pic-nicc.org](http://www.pic-nicc.org)

## **Traffic - A Health Crisis for Youth**

Pat Hines

*Founder/Executive Director Safe Moves*

Room: 200C

1:45 P.M. - 3:00 P.M.

Traffic violence is a public health crisis and is most neglected issue affecting the health and well being of our youth. While the data shows the number of children and teens killed and seriously injured is devastating very little is being done educationally, socially, environmentally or enforcement-wise to reduce this epidemic. The world has halved child mortality with a rigorous focus on under fives' health initiatives and these children survive and many grow into adolescents only to be killed or injured in a traffic collision. We are counting the numbers of youth killed and injured in avoidable traffic collisions, but we are not countering this avoidable loss of life. We need to change the approach so we can provide a sense of urgency to save lives by raising visibility, build political commitment and deliver action and resources for this neglected area of public health.

## **Help Me Grow IE: System Linkages**

Ronnie Robinson

*Section Manager: Systems & Communications at First 5 San Bernardino*

Room: 103

3:15 P.M. - 4:00 P.M.

Attendees will learn about the 4 core components that make up the HMG (Help Me Grow) model. Then they will learn about the diverse collaborators that support the HMG model.

1. Attendees will learn about a countywide system of collaboration that their agency/department can participate in.
2. Attendees will learn about an early detection resource that can be used county/statewide for all families.
3. Attendees will learn more about Help Me Grow Inland Empire Strategic Plan and direction of funding systems in the future.

## **Perfecting your Survey Development Skill: Why and How?**

Yu Zhang

*Smart Start Evaluation and Research*

Room: 106

3:15 P.M. - 4:00 P.M.

Developing surveys to get the proper feedback is a critical component of improving the implementation of your program. Specific survey questions can be used to reveal key information that demonstrates what worked well and where you can improve, and can also help you gather data to measure your outcomes. We will cover how to develop meaningful survey questions to get programmatic feedback and how to ensure your survey connects to your larger program vision. Through a hands-on activity, you will learn how to develop key survey questions, such as understanding the purpose of the questions and using the right scale for questions. We will provide you with recommended resources for developing surveys and give you tips and tricks to improve your existing surveys.

## **Strategies for Cultivating Equity Champions of SRTS Tactical Urbanism**

Demi Espinoza

*Senior Equity & Policy Manager at Safe Routes to School National Partnership*

Room: 104B

3:15 P.M. - 4:00 P.M.

In our panel, we bring together community organizations, local residents, elected and regional planning organizations to tell the story of how multi-stakeholders came together to build SRTS champions. We will discuss how a diverse stakeholder group was organized to tackle Safe Routes to School barriers in the rural disadvantaged and unincorporated community of Muscoy in San Bernardino County. Our panelists will share their community organizing successes to plan a SRTS tactical urbanism project that was funded our regional planning organization. We will also discuss how a regional planning organization can play a supportive role in connecting resources and technical assistance for tactical urbanism to compile community engagement feedback.

## **Human Restoration Services**

Jennifer Kane

*Executive Director Arts Connection at The Art Council of San Bernardino*

Room: 200AB

3:15 P.M. - 4:00 P.M.

Human Restoration Services is a project that combines movement, art, and writing practices as radical offerings to restore kindness back into the art of being human. Join Jennifer Kane for a mindfulness break in the day. We will practice and explore tools you can use everyday and which will transform the way you live and work.

## **Reducing Poverty through Gig Badge and New Collar Economy**

Artina McIntosh

*CEO/Founder of Empowering Success Now*

Room: 200C

3:15 P.M. - 4:00 P.M.

I will be educating attendees about what badge, gig and new collar economies are and how they can prepare themselves or their student to be ready and successful in this new economy. In that regard, I will explain why employers are no longer accepting college degrees in some industries. I will be speaking to the different badges one could obtain and how they are beneficial in the job, career or professional arena. In addition I will introduce the new employment classification "New Collar Jobs" and what careers are available in that field. In respect to business attendees, I will reference the New Collar Job Act in which the business will receive a \$5,000 tax credit for providing educational training for their employees in those New Collar Job fields.



# 2019 NATIONAL INNOVATIVE COMMUNITIES CONFERENCE

A community collaboration presented by Reach Out and Partners for Innovative Communities.  
[www.pic-nicc.org](http://www.pic-nicc.org)

## **Homeless Outreach and Engagement through Community Partnership**

Mike Jones

*San Bernardino County Sheriff Department*

Room: 202AB

3:15 P.M. - 4:00 P.M.

In 2014, the San Bernardino County Sheriffs Department created the Homeless Outreach Proactive Enforcement team. The goal is to use a community policing model to reduce calls for service and costs around homelessness. The HOPE team has evolved over the past five years to better serve the population housing more than 1600 homeless individuals. Over the past year the program began targeting outreach through GIS technology to better serve the homeless population. Utilizing this technology resources can be targeted in the community and data becomes available in live dashboards to better assist providers to understand the needs of the homeless community.

## **Non-Traditional Partnership: Government and the Community Engage in a Multi-faceted Approach to Empower Teens to Take Action and Build a Culture of Health**

Joanna Marrufo

*Management Aide, City of Rancho Cucamonga*

Room: 203AB

3:15 P.M. - 4:00 P.M.

Healthy RC Youth Leaders is an innovative youth leadership program that provides youth with the opportunity to collaborate with their local City on developing policies, programs, and strategies to increase healthy eating and active living opportunities. The Healthy RC Youth Leaders have been extremely successful in collaborating with the City and its Healthy RC stakeholders on the development of policies such as nutrition and beverage standards, complete streets, and e-cigarette regulations. The Youth Leaders developed the first Teen Summit because they saw an urgent need for their peers to have an opportunity to have their voice heard. The Teen Summit is meant for high school students to meaningfully engage in discussions around health issues and develop strategies. As a result of the Teen Summit, the City has partnered with schools to implement mental health symposiums, parent nights, and staff suicide prevention trainings to address the needs of the teen community.

## **Bullet Proof Identity**

Paul Espinosa

*Prevention Plus*

Room: 203C

3:15 P.M. - 4:00 P.M.

As a former Gang member and Drug dealer I emphasize the harsh consequences that can come from making bad choices. I encourage youth to find their true identity, talents and purpose in life. My hope is that they will choose to live healthy lifestyle and be a productive member of society.





## Behavioral Health



# Wellness, Recovery, & Resilience.

The San Bernardino County Department of Behavioral Health Substance Use Disorder and Recovery Services (SUDRS) program promotes prevention, intervention, recovery and resiliency for individuals and families.

## Adolescent services include -

- Screening , Assessment, and Referrals
- Healthy Homes
- Therapeutic Behavioral Services (TBS)
- Centralized Children's Intensive Case Management Services (CCICMS)
- Parent Partner Program
- Community Crisis Response Team
- Juvenile Justice Program (JJP)
- Specialty Courts
- Transitional Age Youth (TAY)
- Youth Substance Use Disorder Services
- Residential and Outpatient Services

For more information on these services or other behavioral health related services, please call the DBH ACCESS Unit at **(888) 743-1478** **(7-1-1 for TTY users)** or visit [www.SBCounty.gov/DBH](http://www.SBCounty.gov/DBH).

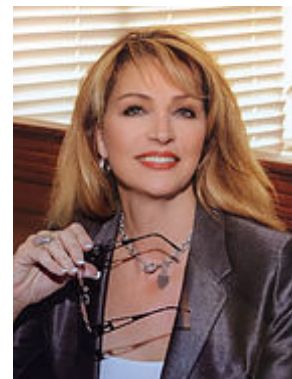


## Wednesday June 19, 2019

8:30 AM - 10:00 AM	<b>Opening Plenary</b> - Placemaking & Profit: Finding Balance in Workforce Housing in the Inland Empire We know that for individual communities to thrive, the businesses within those communities must be competitive, and the people employed by the businesses must earn enough at the very least to afford life's basic necessities, but when workers find themselves with no choice but to move further and further away from their place of employment in order to afford housing or live in stable neighborhoods, quality of life measures suffer.																				
10:15 AM - 11:30 AM	<b>Breakout Sessions</b> <table> <tr> <td>Room 103</td><td>George Lamb &amp; Assistant Sheriff Lana Tomlin - Faith &amp; Justice Survey Results Part 1</td></tr> <tr> <td>Room 102AB</td><td>Hope Velarde - Mindfulness in Schools using a Community Schools Model</td></tr> <tr> <td>Room 104AB</td><td>Deputy District Attorney Evelyn Essenwagere - Gang Awareness Presentation for Educators</td></tr> <tr> <td>Room 106</td><td>Gustavo Hurado - Rainbow 101: How to Construct a Community LGBTQ+ Support Group</td></tr> <tr> <td>Room 200C</td><td>Rogelio Robles, Hector Martinez, Sara Rodriguez, Irene Sotelo, Spencer Layman, Jennie Gonzalez, Victor Jibe, Joe Luis Hernandez (traducido al espanol) Success after incarceration: Educational Opportunities &amp; Career Advancement</td></tr> <tr> <td>Room 200AB</td><td>Angel Magallanes - San Bernardino's Response to Domestic Minor Trafficking</td></tr> <tr> <td>Room 203B</td><td>Winter Koifman, Carolyn Rivera, Dr. Elise Pomerance The California Health Homes Program</td></tr> <tr> <td>Room 203C</td><td>Sue Abito - Tomorrow Needs You</td></tr> </table>	Room 103	George Lamb & Assistant Sheriff Lana Tomlin - Faith & Justice Survey Results Part 1	Room 102AB	Hope Velarde - Mindfulness in Schools using a Community Schools Model	Room 104AB	Deputy District Attorney Evelyn Essenwagere - Gang Awareness Presentation for Educators	Room 106	Gustavo Hurado - Rainbow 101: How to Construct a Community LGBTQ+ Support Group	Room 200C	Rogelio Robles, Hector Martinez, Sara Rodriguez, Irene Sotelo, Spencer Layman, Jennie Gonzalez, Victor Jibe, Joe Luis Hernandez (traducido al espanol) Success after incarceration: Educational Opportunities & Career Advancement	Room 200AB	Angel Magallanes - San Bernardino's Response to Domestic Minor Trafficking	Room 203B	Winter Koifman, Carolyn Rivera, Dr. Elise Pomerance The California Health Homes Program	Room 203C	Sue Abito - Tomorrow Needs You				
Room 103	George Lamb & Assistant Sheriff Lana Tomlin - Faith & Justice Survey Results Part 1																				
Room 102AB	Hope Velarde - Mindfulness in Schools using a Community Schools Model																				
Room 104AB	Deputy District Attorney Evelyn Essenwagere - Gang Awareness Presentation for Educators																				
Room 106	Gustavo Hurado - Rainbow 101: How to Construct a Community LGBTQ+ Support Group																				
Room 200C	Rogelio Robles, Hector Martinez, Sara Rodriguez, Irene Sotelo, Spencer Layman, Jennie Gonzalez, Victor Jibe, Joe Luis Hernandez (traducido al espanol) Success after incarceration: Educational Opportunities & Career Advancement																				
Room 200AB	Angel Magallanes - San Bernardino's Response to Domestic Minor Trafficking																				
Room 203B	Winter Koifman, Carolyn Rivera, Dr. Elise Pomerance The California Health Homes Program																				
Room 203C	Sue Abito - Tomorrow Needs You																				
11:45 PM - 1:00 PM	<b>Ballroom</b> <b>Lunch Plenary</b> Keynote: Mary Parks Lunch Buffet, Entertainment & Networking																				
1:00 PM - 2:15 PM	<b>Breakout Sessions</b> <table> <tr> <td>Ballroom BC</td><td>George Lamb - Faith &amp; Justice Town Hall Part 2</td></tr> <tr> <td>Room 103</td><td>Dr. Patricia McQueen - The Impact of Slavery: Its Effects on the Academics of Black Students Today</td></tr> <tr> <td>Room 104B</td><td>Clark Morrow - Latest Drug Trends among the Young</td></tr> <tr> <td>Room 105</td><td>Margari Hill - Building Community Resilience through Design and Anti-Racism Competencies (traducido al espanol)</td></tr> <tr> <td>Room 106</td><td>Bambi Tran &amp; Abby Moua - GRID Alternative - Energy for All</td></tr> <tr> <td>Room 200AB</td><td>Kara Rooney - Engagement Techniques with CSEC Youth</td></tr> <tr> <td>Room 200C</td><td>Kati Ann - Helping Your Teens Navigate Life's Challenges</td></tr> <tr> <td>Room 202AB</td><td>Christian Silva - Becoming a Lifesaver in Your Community - An EMT Student's Perspective</td></tr> <tr> <td>Room 203B</td><td>Rehman Attar - Mental Health In Schools Health - MIND (Moving In New Directions) and SAP (Student Assistance Program)</td></tr> <tr> <td>Room 203C</td><td>Margarita Luna &amp; Albert Jasso - Demystifying the Grantmaking Process</td></tr> </table>	Ballroom BC	George Lamb - Faith & Justice Town Hall Part 2	Room 103	Dr. Patricia McQueen - The Impact of Slavery: Its Effects on the Academics of Black Students Today	Room 104B	Clark Morrow - Latest Drug Trends among the Young	Room 105	Margari Hill - Building Community Resilience through Design and Anti-Racism Competencies (traducido al espanol)	Room 106	Bambi Tran & Abby Moua - GRID Alternative - Energy for All	Room 200AB	Kara Rooney - Engagement Techniques with CSEC Youth	Room 200C	Kati Ann - Helping Your Teens Navigate Life's Challenges	Room 202AB	Christian Silva - Becoming a Lifesaver in Your Community - An EMT Student's Perspective	Room 203B	Rehman Attar - Mental Health In Schools Health - MIND (Moving In New Directions) and SAP (Student Assistance Program)	Room 203C	Margarita Luna & Albert Jasso - Demystifying the Grantmaking Process
Ballroom BC	George Lamb - Faith & Justice Town Hall Part 2																				
Room 103	Dr. Patricia McQueen - The Impact of Slavery: Its Effects on the Academics of Black Students Today																				
Room 104B	Clark Morrow - Latest Drug Trends among the Young																				
Room 105	Margari Hill - Building Community Resilience through Design and Anti-Racism Competencies (traducido al espanol)																				
Room 106	Bambi Tran & Abby Moua - GRID Alternative - Energy for All																				
Room 200AB	Kara Rooney - Engagement Techniques with CSEC Youth																				
Room 200C	Kati Ann - Helping Your Teens Navigate Life's Challenges																				
Room 202AB	Christian Silva - Becoming a Lifesaver in Your Community - An EMT Student's Perspective																				
Room 203B	Rehman Attar - Mental Health In Schools Health - MIND (Moving In New Directions) and SAP (Student Assistance Program)																				
Room 203C	Margarita Luna & Albert Jasso - Demystifying the Grantmaking Process																				
2:30 PM - 4:00 PM	<b>Ballroom</b> <b>Closing Plenary</b> Keynote: Dr. Cid Pinedo Awards, Prizes, Networking																				

## Day 2 Presenters

### Mary Parks Keynote Speaker Day 2



The Keynote Speaker on Wednesday will be Emmy Award winning journalist Mary Parks. She is the central Los Angeles Bureau Chief at Spectrum News as well as creator and host of "American Spirit", a weekly PBS television series. Parks will deliver a motivational talk about leadership and perseverance when it appears the odds are against you.



### Dr. Cid Pinedo Keynote Speaker Day 2

The Closing Keynote Speaker on Wednesday, June 19th is the highly inspirational Cid Pinedo, CEO of the Children's Fund. He is a highly respected executive and educator, human services advocate, and fundraiser with deep roots in the Inland Empire. Pinedo has led the Children's Fund nonprofit organization in its mission of giving vulnerable children support, opportunity, and hope by breaking destructive cycles through his vast network of community partnerships. "Growing up in an under-resourced community of poverty," said Pinedo, "I learned that through hard work and commitment, we can be agents of change."

## Breakout Sessions

### **Mindfulness in Schools Using a Community Schools Model**

Hope Velarde

*Management Analyst, City of Rancho Cucamonga*

Room: 102AB

10:15 A.M. - 11:30 A.M.

A needs assessment conducted at Los Amigos Elementary identified lack of mental health resources and cost as leading factors deterring families from seeking help. The most prevalent mental health issues identified among their children were stress, anxiety, trauma, coping and social skills. Because of this, the City and School decided to pilot, Your Mind Matters: A Mindfulness in Schools Program at Los Amigos Elementary. Research shows that mindfulness practice decreases depression, stress and anxiety, increases attention, improves relationship building and strengthens compassion. The pilot program began Fall 2018 and will end Spring 2019. Based on results of the pilot program, recommendations will be made to improve and expand the program City-wide.



# 2019 NATIONAL INNOVATIVE COMMUNITIES CONFERENCE

A community collaboration presented by Reach Out and Partners for Innovative Communities.  
[www.pic-nicc.org](http://www.pic-nicc.org)

## **Gang Awareness Presentation for Educators**

Deputy District Attorney Evelyn Essenwangere

*Riverside County District Attorney's Office*

Room: 104B

10:15 A.M. - 11:30 A.M.

The Riverside County District Attorney Office is fully dedicated and committed to reducing youth gang violence and delinquency in our communities. To be successful in this regard, the District Attorney Office recognizes that our anti-gang efforts must employ a multi-faceted approach that extends well beyond necessary and important traditional suppression strategies. Accordingly, the District Attorney Office created the Gang Awareness Mentorship and Education (GAME) program. GAME is a prevention and intervention program that focuses on three key strategies: Education, Collaboration, and Community Outreach.

GAME Presentation focus is on families and youth, this presentation provides school staff with gang training on a variety of topics such as how to identify youth gang affiliation, clothing, recent trends, safety tips, the harsh penal and personal consequences to youth due to gang membership and affiliation. The GAME Program reaches approximately 27,000 individuals a year with approximately 300 presentations to youth, parents and educators.

## **Rainbow 101: How to Construct a Community LGBTQ+ Support Group**

Gustavo Hurtado Jr.

*Community Health Worker, RSBCIHI*

Room: 106

10:15 A.M. - 11:30 A.M.

In this presentation, you will learn how to develop the foundation of a LGBTQ+ support group in your communities by understanding the core concerns that comes up when considering the "who, what, when, where, why" during development. In addition, you can partake in a group brainstorm session focused on developing a community LGBTQ+ support group and receive feedback on your development. Get a chance to speak with LGBTQ+ community organizers and health workers who are experienced in running LGBTQ+ support groups as well!

## **Success after Incarceration: Providing Educational Opportunities and Career Advancement**

Rogelio Robles *Founder of the PINTO CLUB*, Hector Martinez *President of the PINTO CLUB*,

Jennifer Gonzalez *Secretary of the PINTO CLUB*

Room: 107

10:15 A.M. - 11:30 A.M.

The purpose of the PINTO Club is to support education and career advancement for low-skill individuals released from incarceration. We do this through partnerships with community based organizations, faith based groups, re-entry agencies, and Chaffey Community College. This club is organized and operated for the purpose of providing resource, direction, academic and career guidance, as well as transition services. PINTO believes availability of appropriate resource and participation in academic programs influences academic and life outcomes, such as finding employment while on parole.

## **Tomorrow Needs You**

Sue Abito

*Volunteer Services Coordinator SB County Department of Behavioral Health*

Room: 203C

10:15 A.M. - 11:30 A.M.

I have a very interactive presentation that includes: slides will cover famous people who suffer with mental illness, "Know The Signs" Campaign and Each Mind Matters, an overview of mental illnesses, shortage in Mental Health Professionals, a game of Jeopardy with 11 questions. Participants will win a prize, Volunteer /Intern opportunities, handouts, brochures, Volunteer Applications and instructions, a musical video on I Love Psychiatry.

## **San Bernardino's Response to Domestic Minor Trafficking**

Angel Magallanes

*C.A.S.E. Coordinator, San Bernardino County Children's Network*

Room: 200

10:15 A.M. - 11:30 A.M.

This session will introduce the attendee to the term CSEC, what it means, why we use it and the ability to identify CSEC youths in a school setting. We will discuss who is at risk, the risk factors and red flags to look out for. An overview of pimp culture, the different types of pimps and traffickers and their recruitment and seasoning tactics. Participants will be introduced to Social-Emotional and Behavioral strategies to promote positive youth engagement and development, and methods to reinforce cross-sector collaboration.

Use of: Survey before session and after.

Use of: Beautiful video to explain a common recruitment tactic and engaging participants to identify recruitment tactics they saw in the video.

## **The California Health Homes Program**

Winter Koifamn

*Outreach Specialist Harbage Consulting, on behalf of The Department of Health Care Services*

Room: 203

10:15 A.M. - 11:30 A.M.

This session provides a detailed overview of the California Health Homes Program (HHP), which is a new managed care Medi-Cal benefit that launched in both Riverside and San Bernardino counties on January 1, 2019. The HHP provides care coordination and care management services to high needs Medi-Cal beneficiaries with eligible chronic conditions who meet specific acuity criteria. This overview includes details about the HHP, the services it provides, and the population it serves. Representatives from the Inland Empire Health Plan and Molina Health Care will provide insight into their implementation process throughout the Inland Empire. Attendees will come away with an understanding of the HHP, its eligibility and enrollment criteria, and its relevance to the client population they serve.



## **The Impact of Slavery: Its effects on the Academic Achievement of Black Students Today**

Dr. Patricia McQueen

*Rhon-Mak Publishing*

Room: 100

1:00 P.M. - 2:15 P.M.

I will present a PowerPoint presentation of my book, *The Impact of Slavery*. The talking points include: The Slavery Legacy, Racism and how it started, The life of the American Slave (testimonies of slaves themselves), The Role that Government Played, and The Impact on Today's Students.

## **Latest Drug Trends Among the Youth**

Clark Morrow

*Crime Prevention Program Coordinator, San Bernardino County Sheriff's Department*

Room: 103

1:00 P.M. - 2:15 P.M.

Heroin, fentanyl, honey butter, juuls, Tesla pills, KD bags, monkey whizz, throttle bottle -- these are all terms anyone working with teenagers should be familiar with, because these are the terms and these are the drugs that our young people are indulging in. 710 is more popular than 420 nowadays, and professionals who work with children should know why -- and, even more importantly, how to tell our youth that neither number is healthful or helpful. This 60-minute powerpoint presentation goes into all the details, with videos..

## **Building Community Resilience Through Design and Anti-Racism Competencies**

Margari Hill

*Co-Founder of Muslim Anti-Racism Collaborative (MuslimARC)*

Room: 104

1:00 P.M. - 2:15 P.M.

From virtual organization to the ground, Muslim Anti-Racism Collaborative (MuslimARC) has provided anti-racism training and education resources to a national network of anti-racist leaders addressing the intersections of racism, xenophobia, and Islamophobia. We have worked with social change organizations in education, policy and advocacy, community organizing, faith based groups, and entertainment. Innovation has been key in maximizing our social impact. Drawing from 5 years of connecting multifaith multi-racial movement leaders through digital media and storytelling, this presentation will highlight how anti-racism competencies and design strategies can help us break down barriers, build bridges, and better our communities.



## **GRID Alternatives - Energy for All**

Bambi Tran & Abby Moua

*Outreach Fellow, GRID Alternatives*

Room: 106

1:00 P.M. - 2:15 P.M.

We are the only non-profit that provides no-cost solar to the median income homeowners/families here in the US. We also have international offices in Nicaragua, Nepal, and Mexico. We are doing our best to provide Energy for All. We assist in those who want to be more sustainable in purchasing an electric/hybrid vehicle with money up to \$5000 as well as providing and installing a charging station at your very own home at NO COST. There is no catch besides being income qualified. We also provide free job training in the Solar industry whether it is electrical work, construction, design, & more. Others have paid \$2000 to \$5000 to get training in the Solar Industry. Here at GRID, we do it for free and we also have volunteer work which is what helps and keeps GRID Alternatives successful in helping everyone. We will engage with the audience and teach them about sustainability. Solar has a bad name but there are reasons for that in which we will dive into within our presentation.

## **Engagement Techniques with CSEC Youth**

Kara Rooney

*Community Engagement Coordinator, San Bernardino County Children's Network*

Room: 107

1:00 P.M. - 2:15 P.M.

This session should be taken by attendees that have a basic knowledge of CSEC 101 or have just taken our CSEC 101 session. We will discuss trauma informed techniques to use with CSEC youth and why this will promote positive youth development and engagement. The use of role playing will show real time interactions and reinforce the objectives and outcomes. Participants will learn Social- Emotional and Behavioral Strategies to promote positive youth engagement and development and how to reinforce cross-sector collaboration.

Use of: Survey before session and after.

Role playing between CSEC youth and service provider.

## **Helping Your Teens Navigate Life's Challenges**

Kati Ann

*Utalk Radio*

Room: 200

1:00 P.M. - 2:15 P.M.

Life is tough. Teens and young adults need someone they can trust to help them navigate life's storms. This workshop will better equip you to help teens get through the tough stuff. You will be equipped to help build bridges with teens to be able to gain their trust and help them through the hard times. We will talk about ways to deal with being bullied, abused, relationship issues and coping methods. Educators, parents and community leaders will receive new and effective strategies for dealing with youth.

## Becoming a Lifesaver in Your Community - An EMT Student's Perspective

Christian Silva - EMT Student, Crafton Hills College

Shirin Hameister - Paramedic/EMT Student, Crafton Hills College

Room: 108

1:00 P.M. - 2:15 P.M.

How can becoming a health professional benefit your community? Join Crafton Hills College staff and students to learn about how the medical field can serve your community. Hear from the Crafton Hills College Allied Health programs about how their futures are bettered through the allied health pathways. Learn more about how becoming a health professional can benefit your community, and also learn about EMT and other medical techniques to help in case of emergency situations.

# Thank you for Attending! From the Reach Out Team



**June 19th, 2019, 8:30 am in the Ballroom**

## Placemaking & Profit: Finding Balance in Workforce Housing in the IE

We know that for individual communities to thrive, the businesses within those communities must be competitive, and the people employed by the businesses must earn enough at the very least to afford life's basic necessities, but when workers find themselves with no choice but to move further and further away from their place of employment in order to afford housing or live in stable neighborhoods, quality of life measures suffer.

When we face such tradeoffs, communities ultimately pay the price. In this plenary session, our panelists will explore how we can assure that workers have better options so that communities can enjoy the type of economic stability that is conducive to both a high quality of life and good business. Workforce housing is a challenge that will require the cooperation of several sectors to solve, and it is critically important for members of the housing, government, and business communities to recognize their shared interests and work together.

### Moderator:

- Peggi Hazlett – CEO, Greater Ontario Business Council

### Panelists:

- Al Zelinka, FAICP, CMSM – City of Riverside, City Manager
- Scott Ochoa – City of Ontario, City Manager
- Jonathan Weldy – Meridian Land Development Co.; Chairman, Planning Commissioner, San Bernardino Co. 1st District; Board Member, San Bernardino Co. Workforce Development Board
- Jimmy Elrod – Southwest Carpenter's Union Local 909/951, Business Agent
- Dave S. Osborne – Ironworkers International Union, General Organizer
- Monique Reza-Arellano - San Bernardino Council of Governments Administrator

### Issues:

- Workforce Housing Principles
- CEQA – Ending Frivolous Lawsuits by Addressing Underlying Causes
- Monitoring Supply Chain Providers for Equity
- FHA/VA Funding Limits in the IE
- Melding Placemaking with Profit
- Action Items for the IE to Address these Challenges





## San Bernardino County Community Vital Signs Initiative

Community Vital Signs is a community-wide initiative supporting the Wellness element under the Countywide Vision. Community Vital Signs is a community-driven effort in partnership with San Bernardino County (SBC) to establish a health improvement framework by using data to help set goals and priorities for action to improve the quality of life for residents within our county.

### CREATING A CULTURE OF HEALTH



[www.CommunityVitalSigns.org](http://www.CommunityVitalSigns.org)



## San Bernardino County Superintendent of Schools

Ted Alejandre, County Superintendent

We believe that communities are interdependent, and grow stronger through collaboration and communication. The San Bernardino County Superintendent of Schools is committed to working with school districts, other agencies, families and the community at large by providing services, information, advocacy and leadership  
– ***always with a focus on students.***

For information on programs and services or for photos and video from around the county, follow us on

@sbc.superintendent.of.schools

[www.sbcss.net](http://www.sbcss.net)

*Transforming lives through education*



moving health  
care forward.

blue  
california

Blue Shield of California is proud to support the 2019 National Innovative Communities Conference.

We salute your continuing efforts to strengthen the lives of others. Never stop.

[blueshieldca.com](http://blueshieldca.com)

© 2019 Blue Shield of California, an independent member of the Blue Shield Association A51884 (5/19)





We are proud to support the  
**2018 National Innovative  
Communities Conference**

*Thank you for creating a positive change in our communities.*

## Congratulations to Reach Out for 50 years of extraordinary service!

As an organization dedicated to improving the health of those in need, Molina Healthcare is grateful for all the support you've given our communities. Thank you!



[MolinaHealthcare.com](http://MolinaHealthcare.com)



**Charles Long**, SVP, Regional Manager  
909.367.7912 | [clong@pacificwesternbank.com](mailto:clong@pacificwesternbank.com)  
569 N. Mountain Avenue, Upland, CA

[pacificwesternbank.com](http://pacificwesternbank.com)



## GenerationGo!

“Without GenerationGo! and Valley College, this wouldn't [have] happened...it was pretty cool.”  
– Richard, Student Intern

Richard graduated from high school and became employed full-time after his GenerationGo! internship with Garner Holt Productions.

### Career Pathways Program

Through our Career Pathways Program, high school students are offered innovative opportunities in both education and real world work experience. Career Pathway partnerships allow youth to be co-enrolled in high school and college giving them a glimpse of themselves as college students and participants in the future workforce. The work-based learning program enables businesses, schools, community colleges, and universities alike to benefit from the success of the students.



If you would like to participate or have any questions, please email:  
[GenGo@wdd.sbcounty.gov](mailto:GenGo@wdd.sbcounty.gov)

[vision2succeed.org](http://vision2succeed.org)  
[www.sbcounty.gov/workforce](http://www.sbcounty.gov/workforce)

Mariann Johnson, Deputy Director  
Phone: (800) 451-JOBS (5627)



## We believe in a healthy future.

At Kaiser Permanente, our commitment to well-being goes beyond health care. We're also committed to improving the communities we serve. That's why we support Reach Out's National Innovative Communities Conference.

Together we make a difference.



[community.kp.org](http://community.kp.org)



# *Thank you to our Sponsors*



SOUTHERN CALIFORNIA  
**EDISON**<sup>®</sup>

Energy for What's Ahead<sup>®</sup>



LOMA LINDA  
UNIVERSITY  
HEALTH  
would like to  
congratulate Reach Out  
on their 10th Annual  
National Innovative  
Communities Conference.



LOMA LINDA  
UNIVERSITY  
Institute for  
Community Partnerships



Riverside County  
Supervisor - 2nd District  
Karen Spiegel



UNIVERSITY OF  
**LA VERNE**





Building Health Into Everyday Life



Public Health

Healthy People, Healthy Community

 Methodist Hospital

CONGRATULATIONS

Reach Out

on 50 years of service  
to kids and families!

For a FREE physician referral,  
call 1-888-388-2838 or go to  
[www.methodisthospital.org/findadoc](http://www.methodisthospital.org/findadoc)



@methodisthospitalsc  
[www.methodisthospital.org](http://www.methodisthospital.org)

# Strengthening Communities

Get involved in your community, join a coalition today!



**Contact Valerie Guerrero**  
**Valerie@we-reachout.org**  
**(909) 982-8641**



**Contact Valerie Guerrero**  
**Valerie@we-reachout.org**  
**(909) 982-8641**



**Contact Josie Gaytan**  
**Josie@we-reachout.org**  
**(909) 982-8641**



**MBCC**  
Morongo Basin Community Coalition

**Contact Valerie Guerrero**  
**Valerie@we-reachout.org**  
**(909) 982-8641**



**Contact Yara William**  
**Yara@we-reachout.org**  
**(909) 982-8641**



**LATINO HEALTH**  
COLLABORATIVE

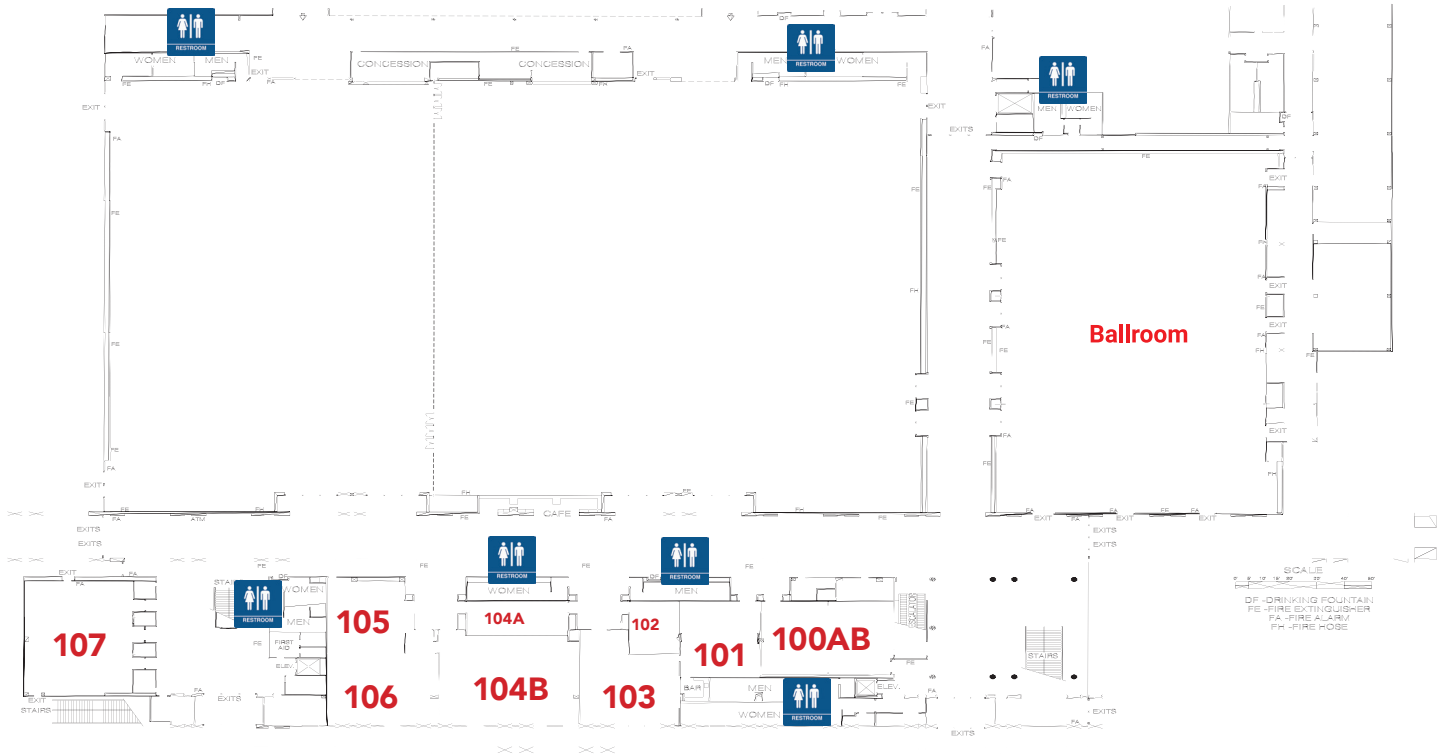
**Contact Josie Gaytan**  
**Josie@we-reachout.org**  
**(909) 982-8641**

Reach Out is dedicated to embracing communities to strengthen the human bonds that enable all community members to grow, thrive, and lead. Since 1969, we have provided equal access to networks of support, quality education, career options and opportunities to develop skills to succeed.

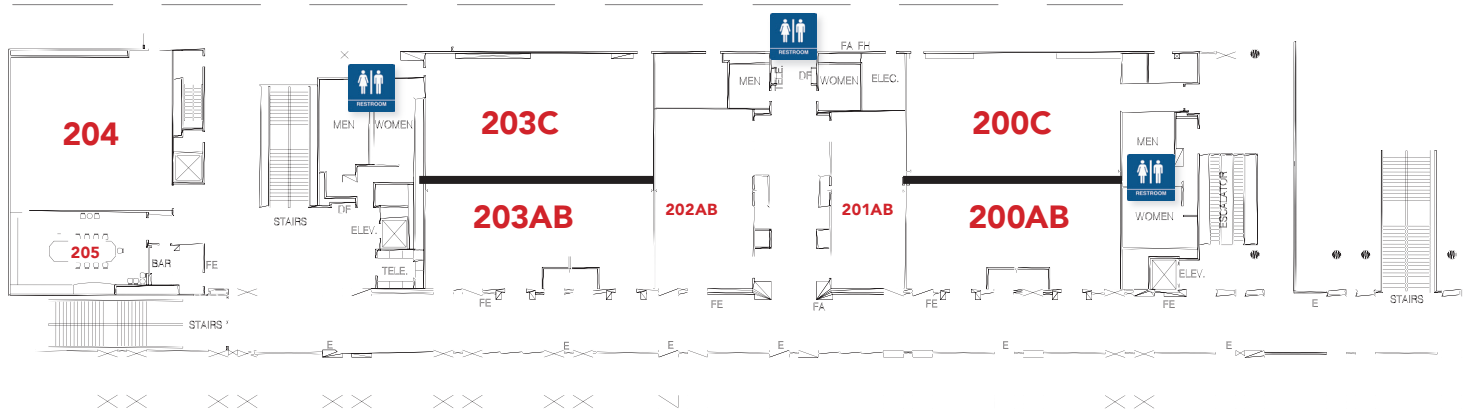


**REACH OUT**  
Strengthening Communities

## 1st Level



## 2nd Level





# ANNUAL NATIONAL INNOVATIVE COMMUNITIES CONFERENCE NICC 2019

**LEADERSHIP. ACTION. LEGACY.**

*The National Innovative Communities Conference is a community collaboration  
presented by Partners for Innovative Communities and Reach Out*



**PARTNERS FOR  
INNOVATIVE COMMUNITIES**

Connect with Us!

[www.picsocal.org](http://www.picsocal.org)



/PIC\_socal



@PIC\_socal



@PIC\_socal



**REACH OUT**  
Strengthening Communities

Connect with Us!

[we-reachout.org](http://we-reachout.org)



/WeAreReachOut



@WeAreReachOut



@WeAreReachOut

**Thank you for making the  
2019 National Innovative Communities  
Conference a memorable event.**

Visit us at [www.pic-nicc.org](http://www.pic-nicc.org) for highlights from the 2019 National Innovative Communities Conference and to sign up for future updates on next year's conference.